

## PRODUCT INFORMATION

<b>Clone ID</b>	DMC368
<b>Target</b>	GPR75
<b>Synonyms</b>	Probable G-protein coupled receptor 75
<b>Host Species</b>	Rabbit
<b>Description</b>	PE-conjugated Anti-GPR75 antibody(DMC368); IgG1 Chimeric mAb
<b>Delivery</b>	3-4 weeks
<b>Uniprot ID</b>	O95800
<b>IgG type</b>	Rabbit/Human Fc chimeric IgG1
<b>Clonality</b>	Monoclonal
<b>Reactivity</b>	Human
<b>Applications</b>	Flow Cyt
<b>Recommended Dilutions</b>	Flow Cyt 1:100
<b>Purification</b>	Purified from cell culture supernatant by affinity chromatography
<b>Formulation &amp; Reconstitution</b>	Liquid□PBS with 0.05% Proclin300, 1% BSA
<b>Storage &amp; Shipping</b>	Store at 2°C-8°C for 6 months
<b>Background</b>	GPR75 is a member of the G protein-coupled receptor family. GPRs are cell surface receptors that activate guanine-nucleotide binding proteins upon the binding of a ligand.
<b>Usage</b>	Research use only
<b>Conjugate</b>	PE-conjugated



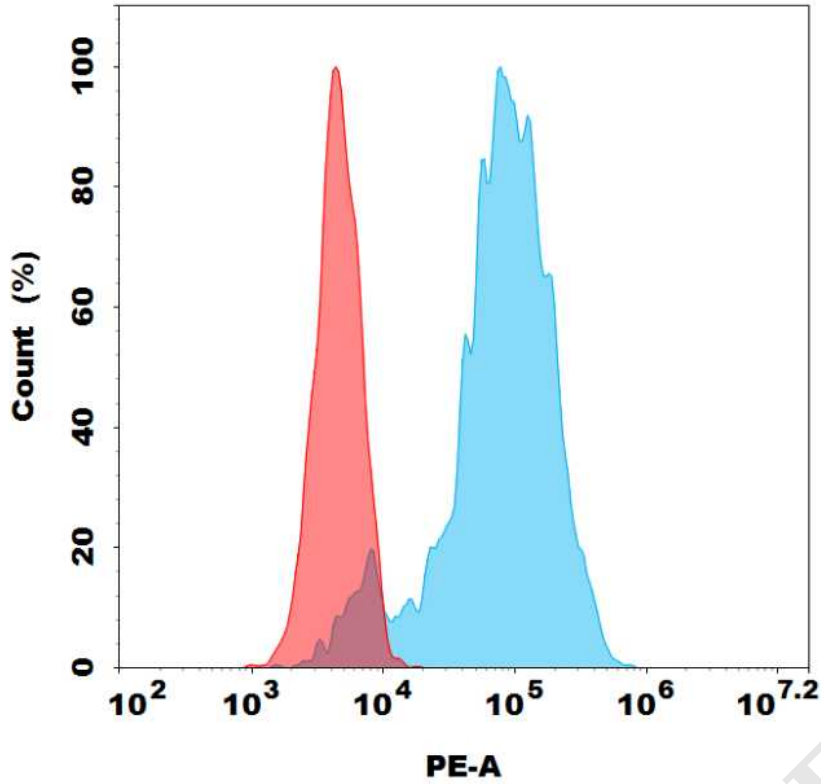


Figure 1. Flow cytometry analysis with 0.5 $\mu$ l/test PE Anti-GPR75 antibody(DMC368) on CHO-GPR75 stable expression cell line (Blue histogram) or CHO (Red histogram).

DIMABIO CONFIDENTIAL

