

**PRODUCT INFORMATION**

<b>Clone ID</b>	DM91
<b>Target</b>	GPRC5D
<b>Synonyms</b>	GPRC5D
<b>Host Species</b>	Rabbit
<b>Description</b>	PE-conjugated Anti-GPRC5D antibody(DM91); Rabbit mAb
<b>Delivery</b>	In Stock
<b>Uniprot ID</b>	Q9NZD1
<b>IgG type</b>	Rabbit IgG
<b>Clonality</b>	Monoclonal
<b>Reactivity</b>	Human
<b>Applications</b>	Flow Cyt
<b>Recommended Dilutions</b>	Flow Cyt 1:100
<b>Purification</b>	Purified from cell culture supernatant by affinity chromatography
<b>Formulation &amp; Reconstitution</b>	Liquid, PBS with 0.05% Proclin300, 1% BSA
<b>Storage &amp; Shipping</b>	Store at 2°C-8°C for 6 months
<b>Background</b>	The protein encoded by this gene is a member of the G protein-coupled receptor family; however; the specific function of this gene has not yet been determined.
<b>Usage</b>	Research use only



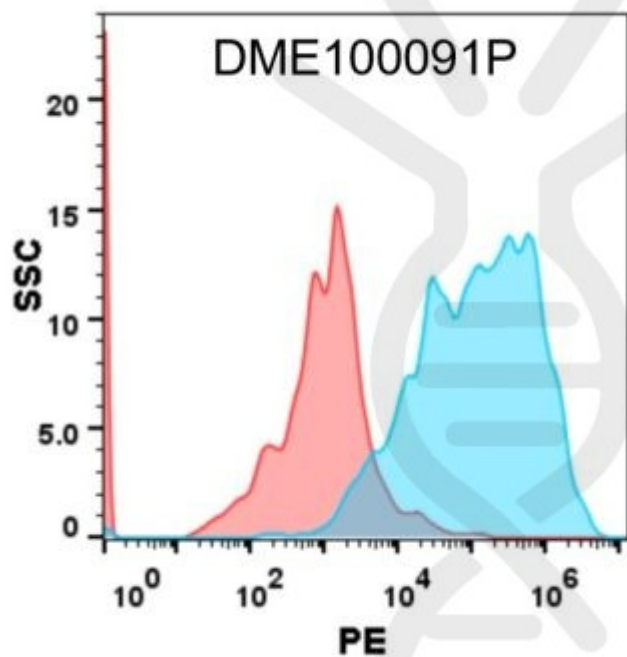


Figure 1. Flow cytometry analysis with 100  $\mu$ L of 1:100 dilution PE-conjugated Anti-GPRC5D(DM91) mAb (DME100091P) on Expi293 cells transfected with Human GPRC5D protein (Blue histogram) or Expi293 transfected with irrelevant protein (Red histogram).

DIMABIO CONFIDENTIAL

