

PRODUCT INFORMATION

Common Name	MEDI4736
Conjugate	PE-conjugated
Synonyms	PD-L1;CD274;B7-H1;PDCD1L1;PDCD1LG1
Applications	Flow Cyt
Recommended Dilutions	1µl/test
Formulation & Reconstitution	Liquid□PBS with 0.05% Proclin300, 1% BSA
Host Species	Humanized
IgG type	IgG1(K97R, L117F, L118E, P214S)
Reactivity	Human
Target	PDL1
Uniprot ID	Q9NZQ7
Description	PE-conjugated Anti-PDL1 (durvalumab biosimilar) mAb
Delivery	In Stock
Storage & Shipping	Store at 2°C-8°C for 6 months
Background	Research grade biosimilar. Not for use in therapeutic or diagnostic procedures for humans or animals.
Usage	Research use only
DIMA Disclaimer	All DIMA recombinant antibodies are genuinely generated by DIMA Biotech. They are all under patent application. Any protein sequencing or reverse engineering attempt is prohibited. We are actively scrutinizing all patent application to ensure no IP infringement.



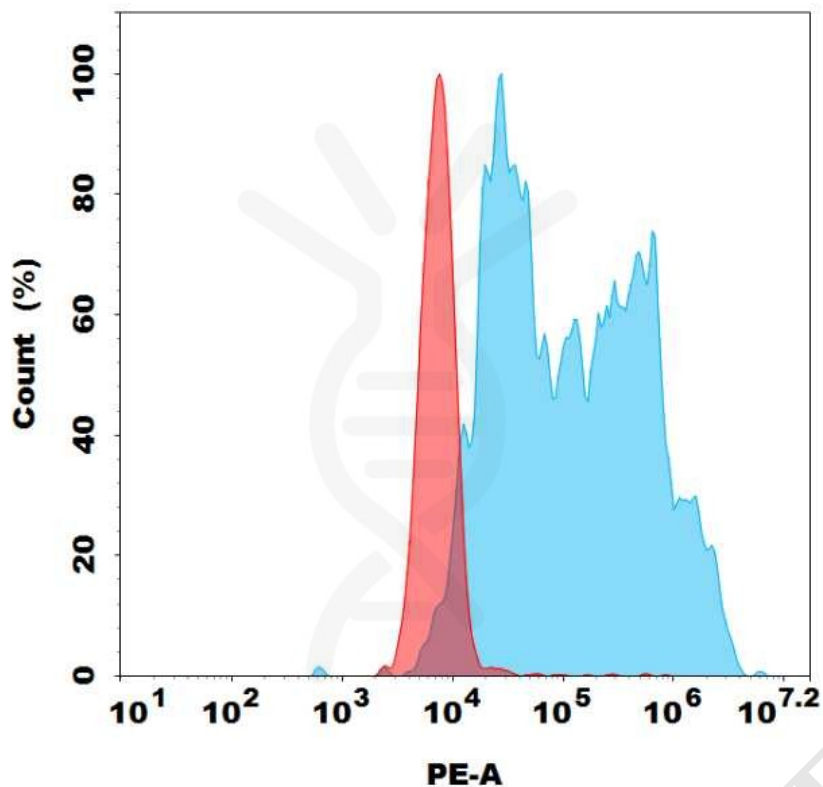


Figure 1. Flow cytometry analysis with 1 μ l/test PE-conjugated Anti-PD-L1(durvalumab biosimilar) mAb on Expi293 cells transfected with Human PD-L1 protein (Blue histogram) or Expi293 transfected with irrelevant protein (Red histogram).

DIMA BIO CONFIDENTIAL

